

CERTIFICATE OF LOCATION OF GOVERNMENT CORNER

NORTH QUARTER Corner of Section 26, Township 105, Range 42, 5TH P.M.

STATE OF MINNESOTA, County of MURRAY

At the corner location shown on the sketch:

On 06/19/2017 found a COUNTY TIES FROM 1973 MATCHING COORDINATES FROM
DATE ZIESKE LAND SURVEYING.

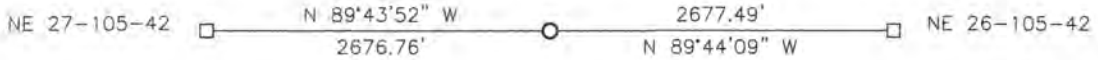
left monument as found, lowered monument, removed monument (explain)

On 07/17/2018 placed a SURVEY SPIKE WITH SEAL #43844.
DATE

SKETCH OF REFERENCE TIES



X
X
X
X



FIELD LINE

Minnesota State Plane Coordinate
System Murray County Datum
NAD83 (1996)

N: 110691.217
E: 477022.834

Statement of evidence relative to this corner location is on back of page.

I hereby certify that this document and the data contained herein was prepared by me or under my direct supervision.

Daniel L. Bueltel

License No. 43844

8/28/18
DATE

Statement of Evidence

N1/4 26-105-42

In 1858, W. J. Neely did the original subdivision of the township.

On June 7, 1973, the Murray County Highway Department found a concrete monument at the corner. They set a steel pin over the monument.

On October 9, 2003, Zieske Land Surveying set a 1" pipe with seal #23008 over the corner monument.

On June 19, 2017, Bueltel-Moseng Land Surveying did not find the pin set by Zieske Land Surveying in 2003. We were able to find the ties the county set in 1973. The county ties were within $0.1' \pm$ of the coordinates recorded by Zieske Land Surveying. We held to the recorded coordinates.

On July 17, 2018, Bueltel-Moseng Land Surveying set a survey spike with seal #43844 at the surface of the road after construction. It is in the center of the road, in line with the fence to the north and the field line to the south.